

Knife gate valves

Models

Model 200

DN 50 - DN 1200



- Unidirectional wafer type valve.

Full Lug model

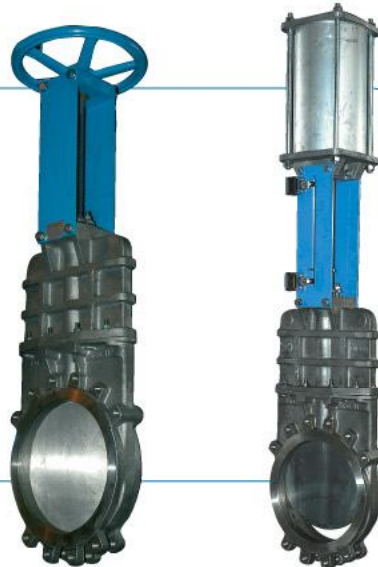
DN 50 - DN 600



- Unidirectional lug type valve.

With bonnet

DN 50 - DN 600



- For 200 and Full Lug models.

Model 400

DN 50 - DN 600

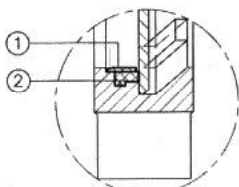


- Unidirectional wafer type valve.
- Lateral clearing holes.
- Specially designed for silo discharge applications.

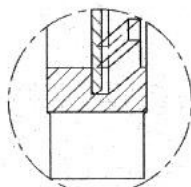
* TAPPI MODEL (HEAVY DUTY VALVE): Which differ from the Fully Lugged Model 200 in the thickness of body and gate.
Higher Design Pressure (DP) 10 Bar from DN50 to DN600.

Types of seat

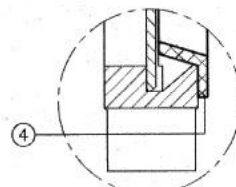
SOFT SEATED



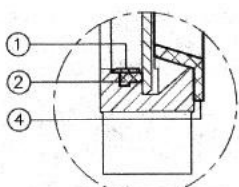
METAL SEATED



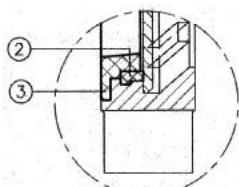
METAL SEATED
WITH DEFLECTING CONE 15°



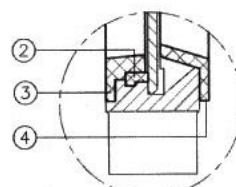
SOFT SEATED
WITH DEFLECTING CONE 15°



SOFT SEATED
WITH SCRAPER 8°



SOFT SEATED
WITH DEFLECTING CONE 15° AND SCRAPER 8°



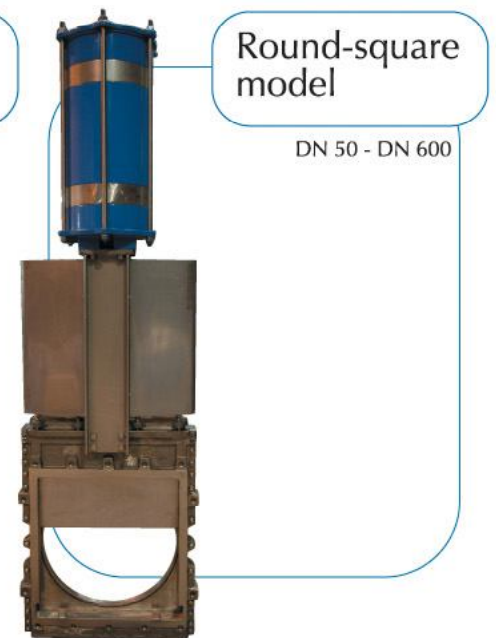
- ① FIXING RING
- ② SOFT SEAT
- ③ SCRAPER 8°
- ④ DEFLECTING CONE 15°



- Bidirectional wafer type valve.

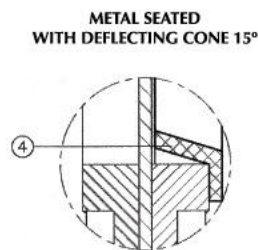
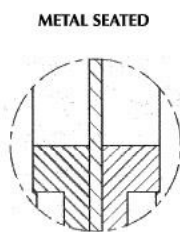
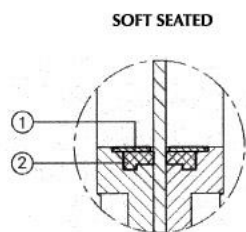


- Bidirectional wafer type valve.

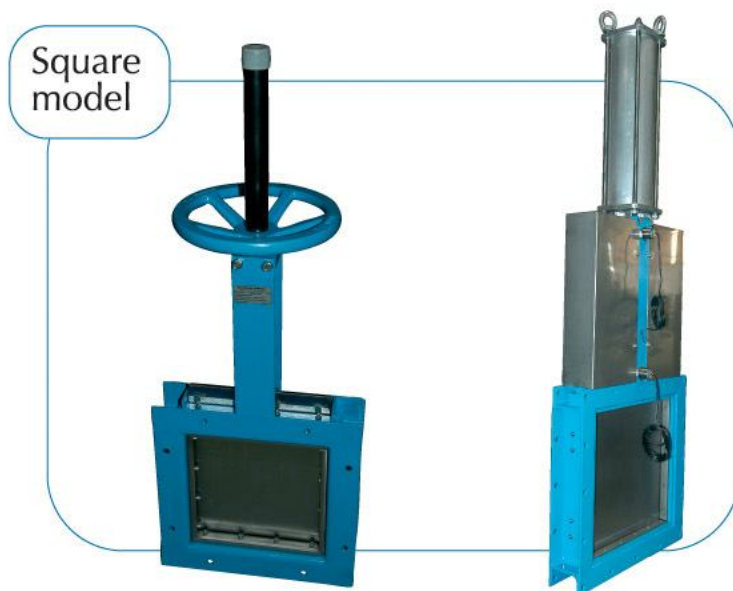
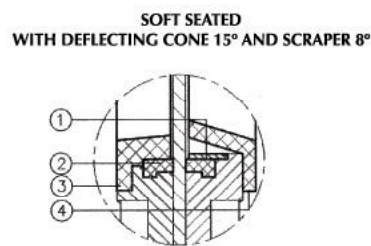
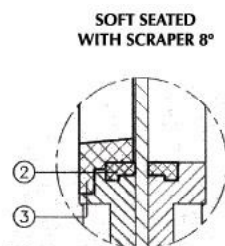
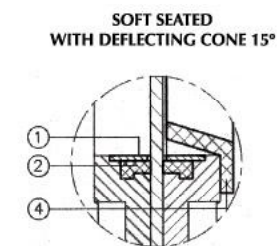


- Unidirectional wafer type valve.

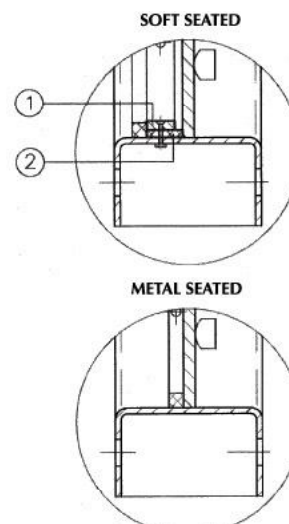
△ Types of seat



- ① FIXING RING
- ② SOFT SEAT
- ③ SCRAPER 8°
- ④ DEFLECTING CONE 15°



- Unidirectional valve.
- Designed depending on the working conditions.
- Available with bonnet.



Types of seat ▽

- ① FIXING PLATE
- ② SOFT SEAT

Fabricated construction knife gate valve

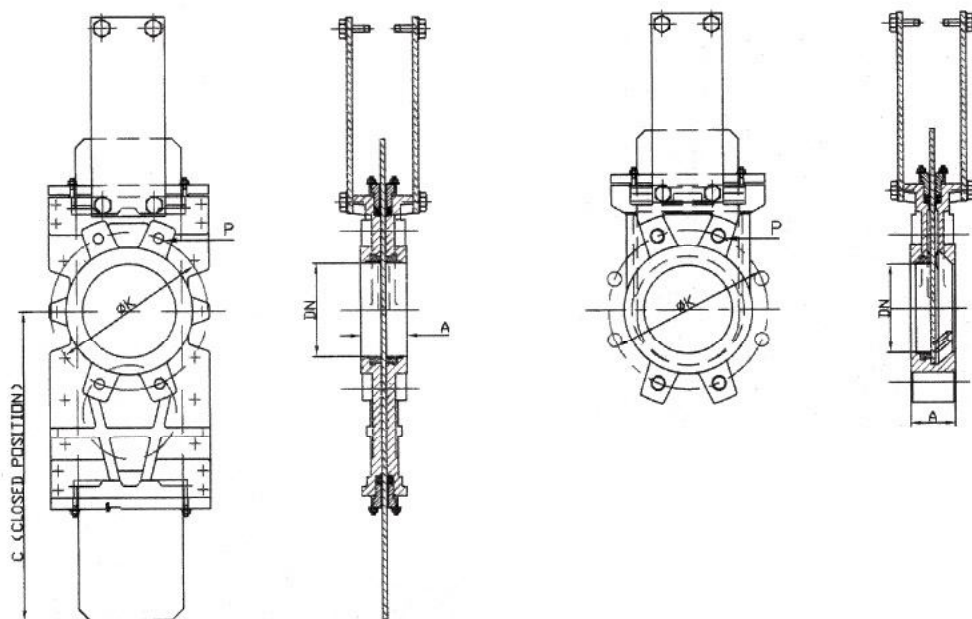


- Unidirectional or bidirectional flanged or wafer type.
- Fabricated construction body and bonnet.

High pressure knife gate valve



- Unidirectional flanged type.
- Monobloc body and cast bonnet.



Dimensions

MAXIMUM WORKING PRESSURES RECOMMENDED:

DN50 - DN250= 10Kg/cm²
 DN300 - DN400= 6Kg/cm²
 DN450= 5Kg/cm²
 DN500 - DN600= 4Kg/cm²

CONTRAPRESSURES (MODEL 400):

DN50 - DN250= 3Kg/cm²
 DN300 - DN400= 2Kg/cm²
 DN450= 1.5Kg/cm²
 DN500 - DN600= 1Kg/cm²

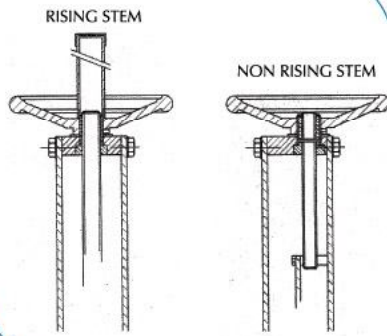
DN	INCHES	A					Ø K		P		
		200 MODEL	400 MODEL	FULL LUG MODEL	TAPPI MODEL	300 MODEL	PN 10	ANSI 150	NUMBER OF HOLES	PN 10	ANSI 150
50	2"	40	60	40	48	40	125	120,6	4	M 16	W 5/8"
65	2 1/2"	40	60	40	48	40	145	139,7	4	M 16	W 5/8"
80	3"	50	64	50	51	50	160	152,4	8	M 16	W 5/8"
100	4"	50	64	50	51	50	180	190,5	8	M 16	W 5/8"
125	5"	50	70	50	57	50	210	215,9	8	M 16	W 3/4"
150	6"	60	76	60	57	60	240	241,3	8	M 20	W 3/4"
200	8"	60	89	60	70	60	295	298,4	8	M 20	W 3/4"
250	10"	70	114	70	70	70	350	361,9	12	M 20	W 7/8"
300	12"	70	114	70	76	70	400	431,8	12	M 20	W 7/8"
350	14"	96	127	96	76	96	460	476,2	16	M 20	W 1"
400	16"	100	140	100	89	100	515	539,7	16	M 24	W 1"
450	18"	106	152	106	89	106	565	577,8	20	M 24	W 1 1/8"
500	20"	110	152	110	114	110	620	635	20	M 24	W 1 1/8"
600	24"	110	178	110	114	110	725	749,3	20	M 27	W 1 1/4"

* Higher diameters under request

* Valves manufactured following European Pressure Equipment Directive PED 97/23/CE.

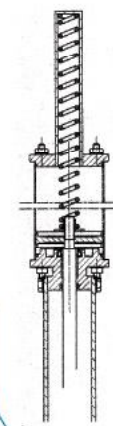
Drives

HANDWHEEL

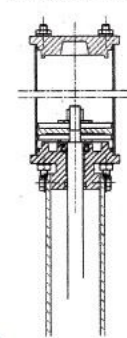


PNEUMATIC

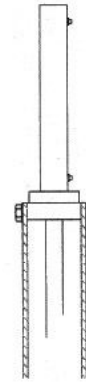
SINGLE ACTING



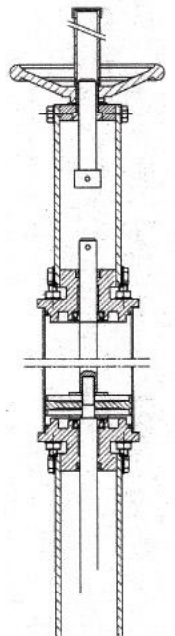
DOUBLE ACTING



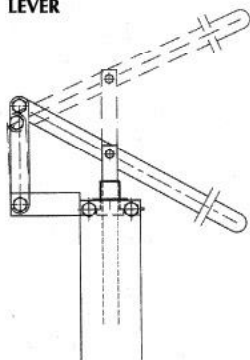
HYDRAULIC



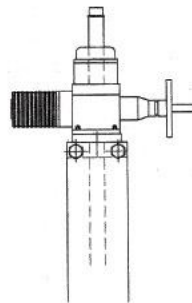
PNEUMATIC-HANDWHEEL



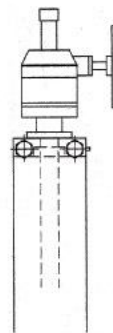
LEVER



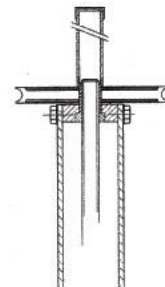
ELECTRIC



GEAR BOX



CHAIN-WHEEL

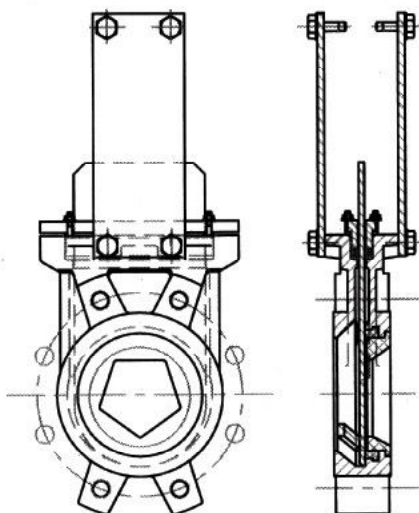


- All the drives are interchangeable with any knife gate valves.

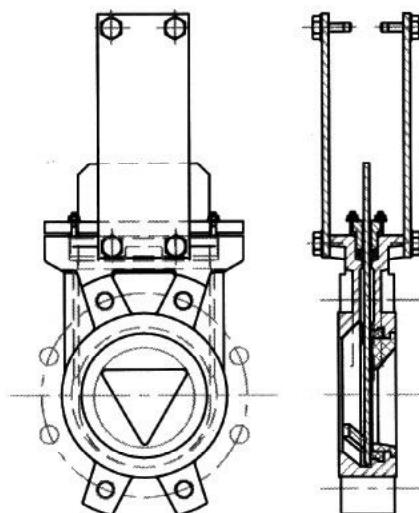
Accessories

- Solenoid control valves.
- Inductive proximity sensors.
- Mechanical limit switches.
- Stops mechanical.
- Rubber sleeves.
- Extensions.
- Diaphragm for regulation.

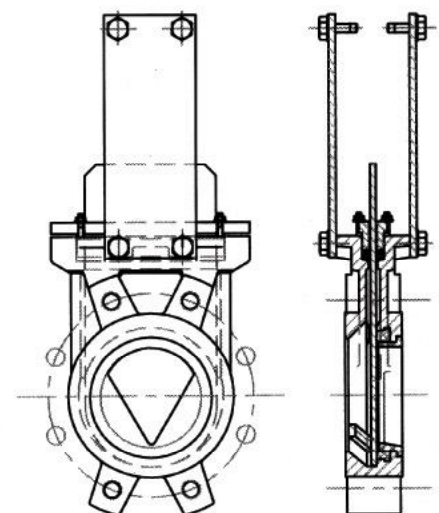
PENTAGONAL DIAPHRAGM



TRIANGULAR DIAPHRAGM

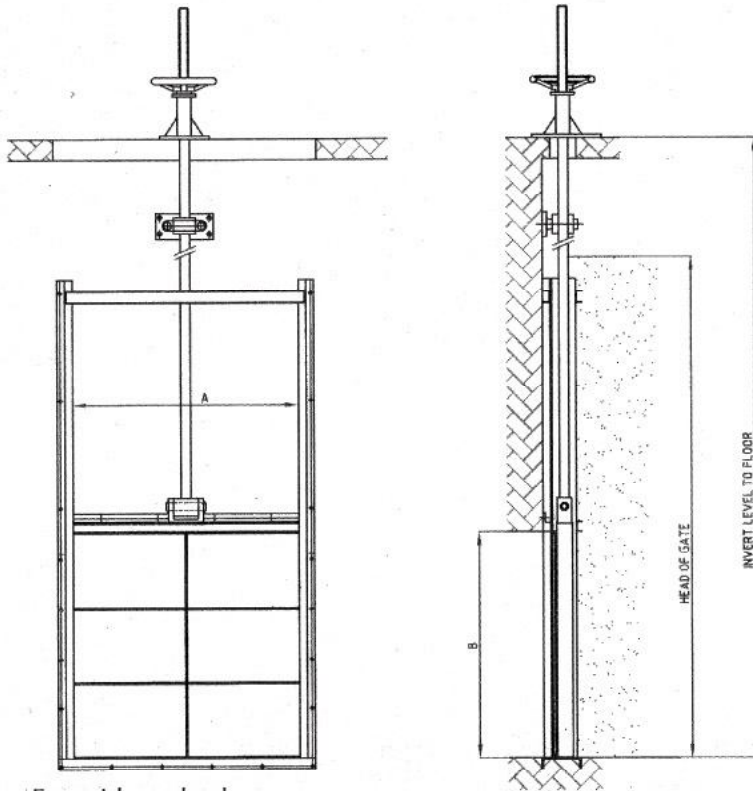


V-PORT DIAPHRAGM



Penstock valves

Models

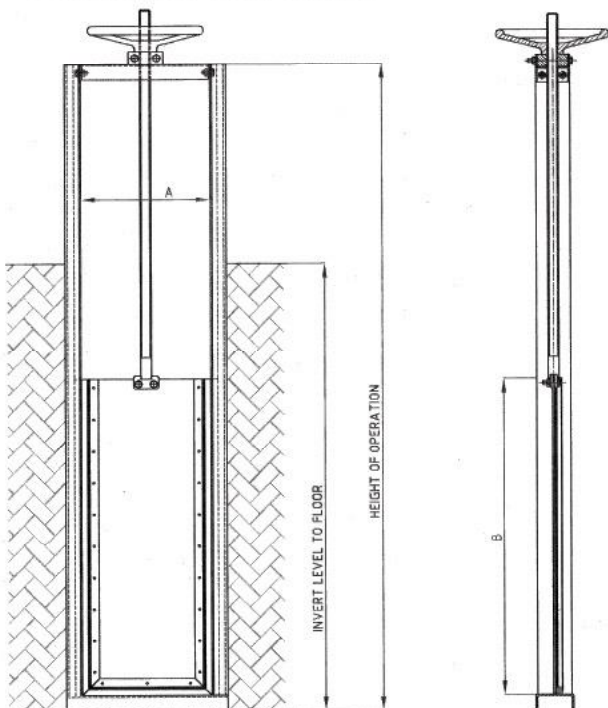


- Four side seal valve.
- Tightness: 100%.
- Different shapes available: square, rectangular & round.
- On & Off seat. Under request.

Wall penstocks



Channel penstocks



- Three side seal valve.
- Different shapes available: square & rectangular.



- * OVERFLOW GATE VALVE: Three side seal valve.
- * FLAP VALVE: Intended to prevent backflow. Wall assembly as end of line or pipe assembly.
- * Penstock valves designed depending on the working conditions.
- * Valves manufactured following European Pressure Equipment Directive PED 97/23/CE.

Drives



- Handwheel.
- Electric actuator.
- Gear box.
- Pneumatic actuator.

* All the drives are interchangeable with any penstock models.